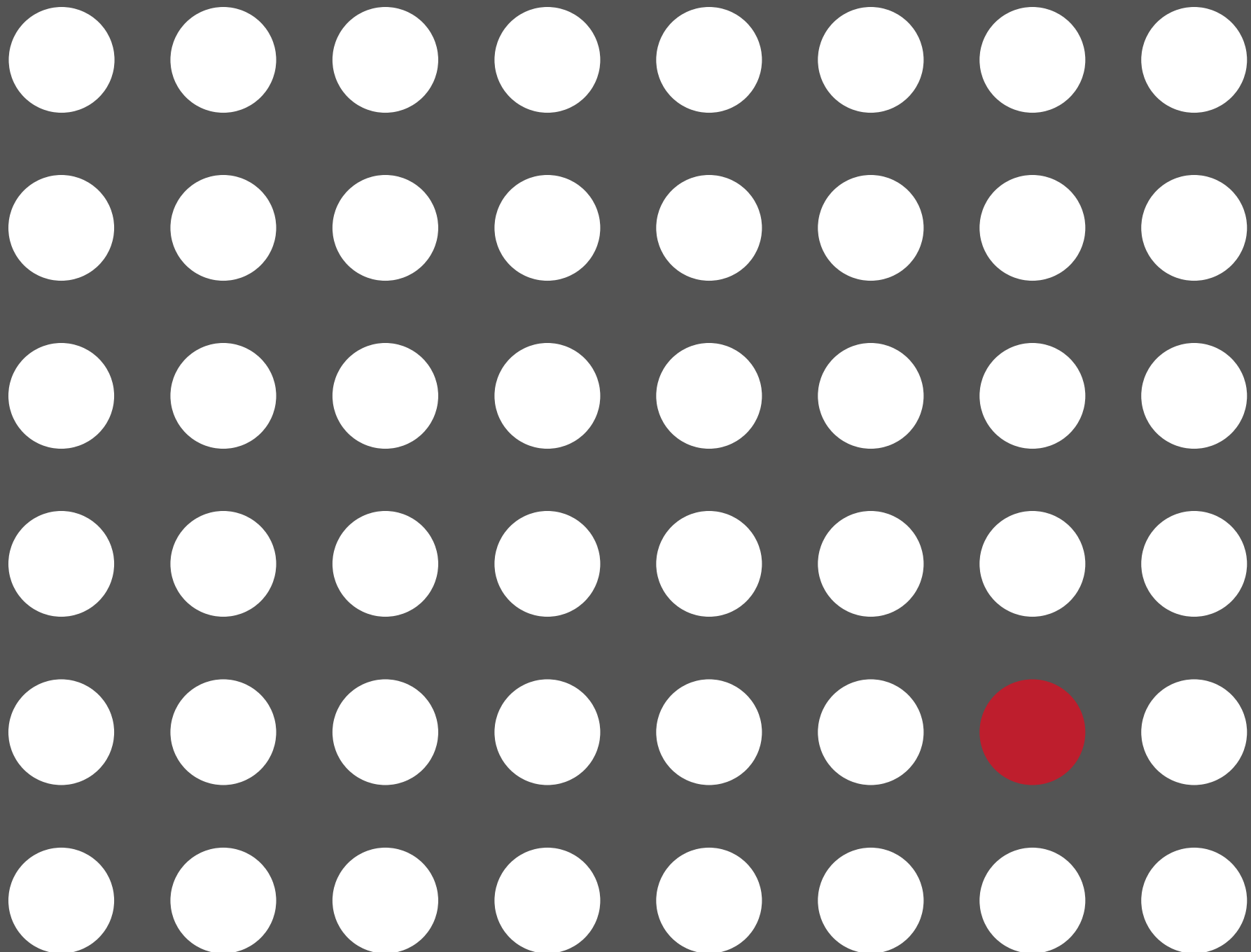


DIRECTORBANK.

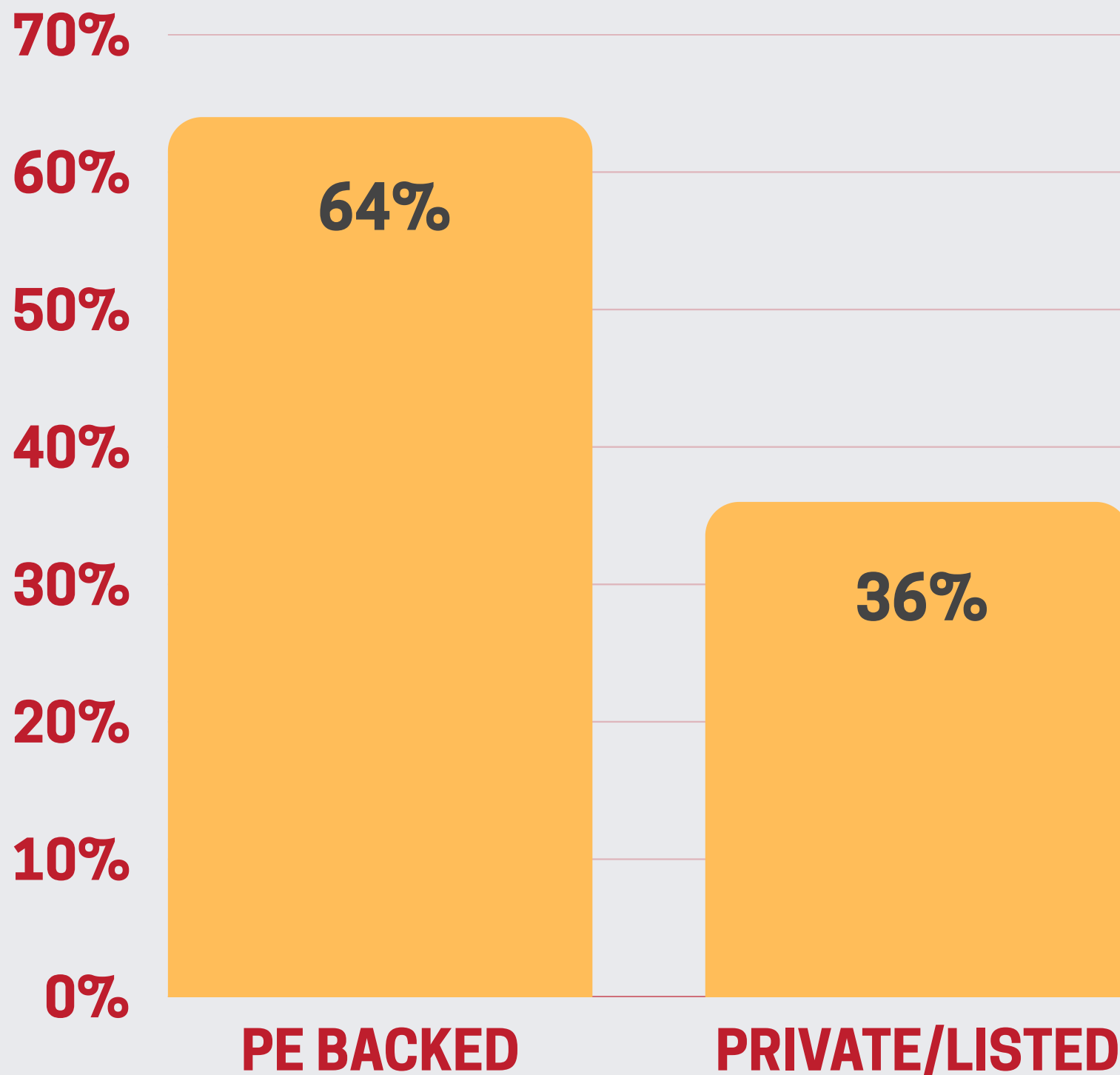
REVIEW OF 2024

ACTIVITY & HIGHLIGHTS



01

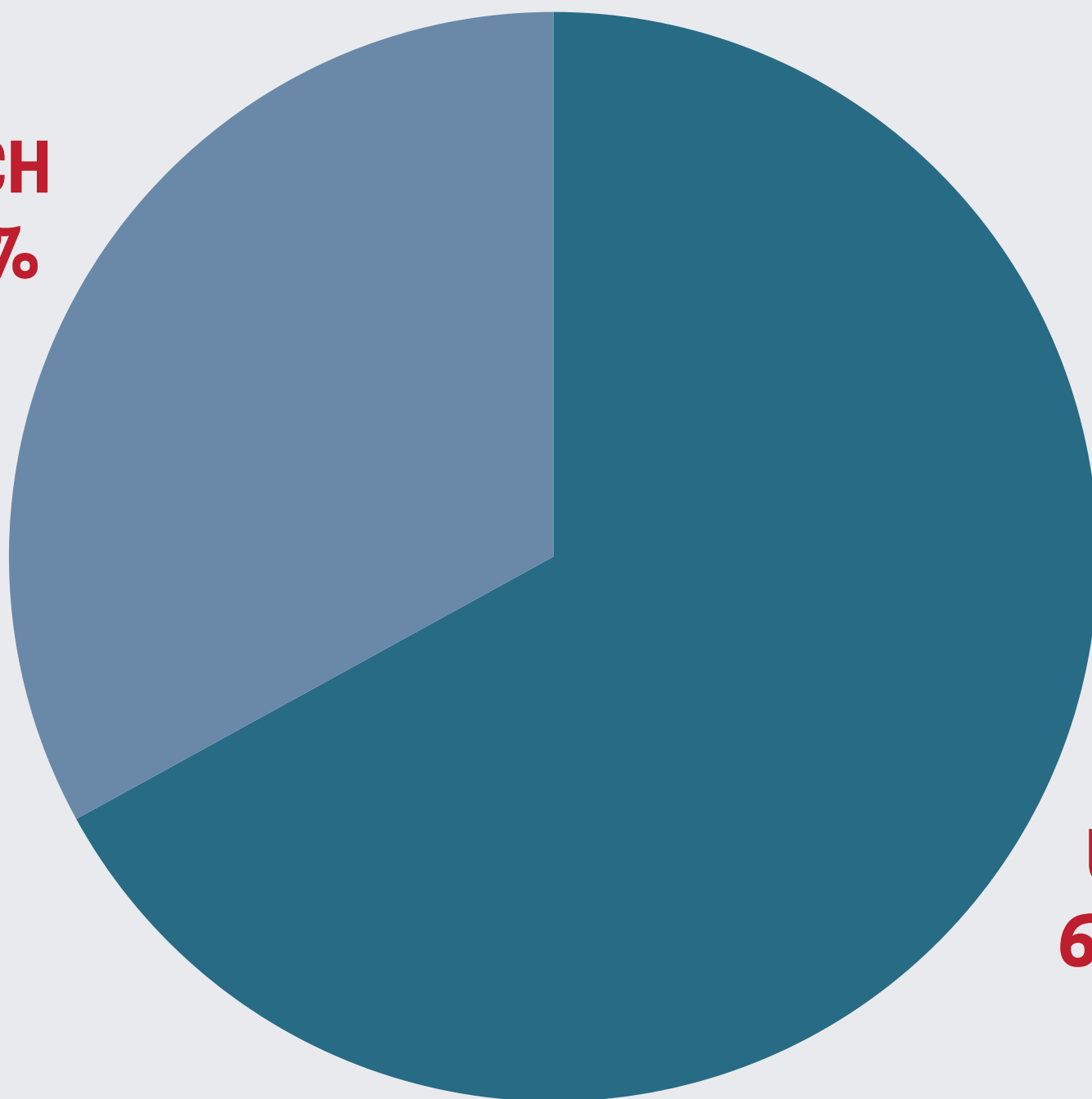
ACTIVITY BY OWNERSHIP.



02

ACTIVITY BY COUNTRY.

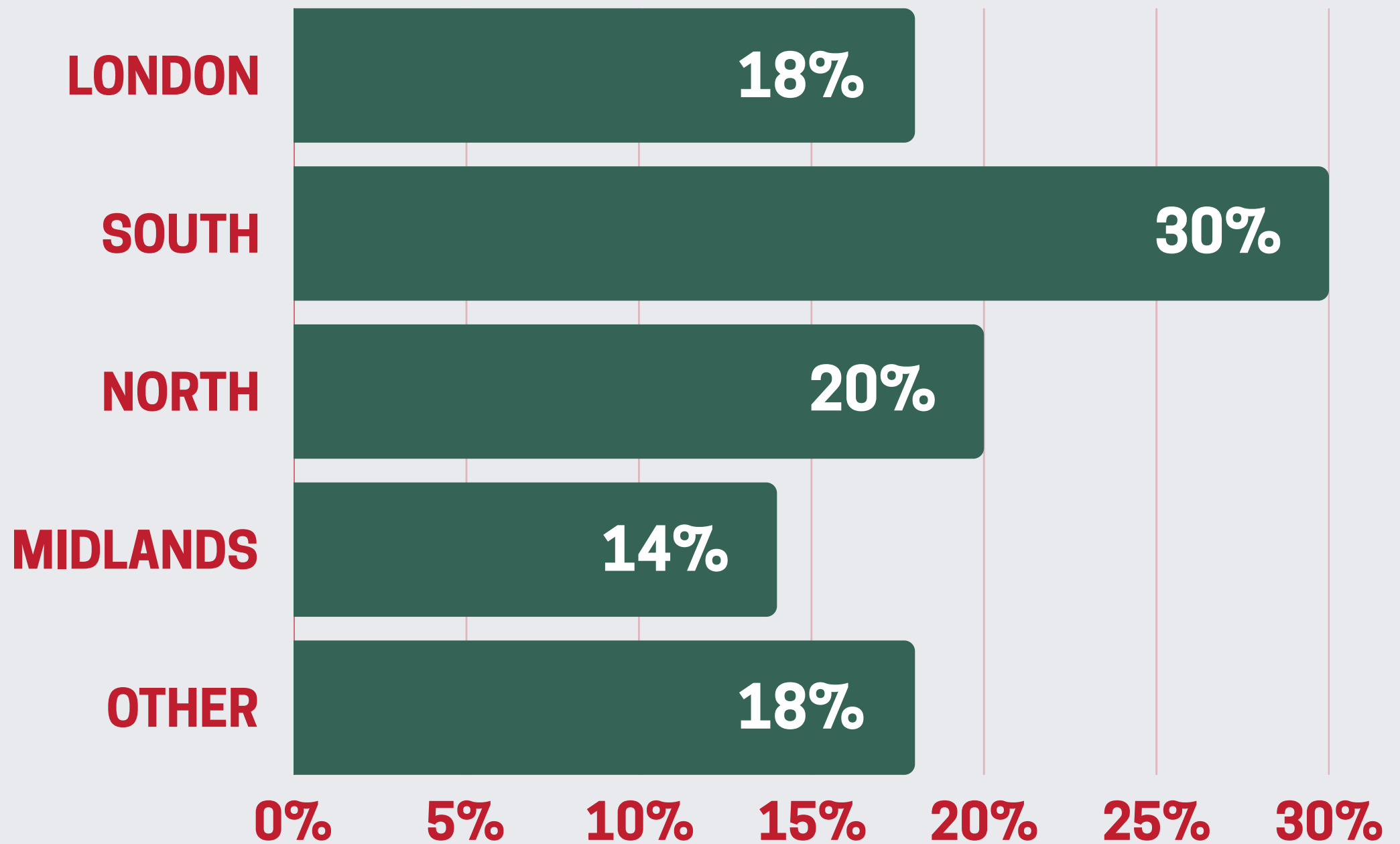
**DACH
33%**



**UK
67%**

03

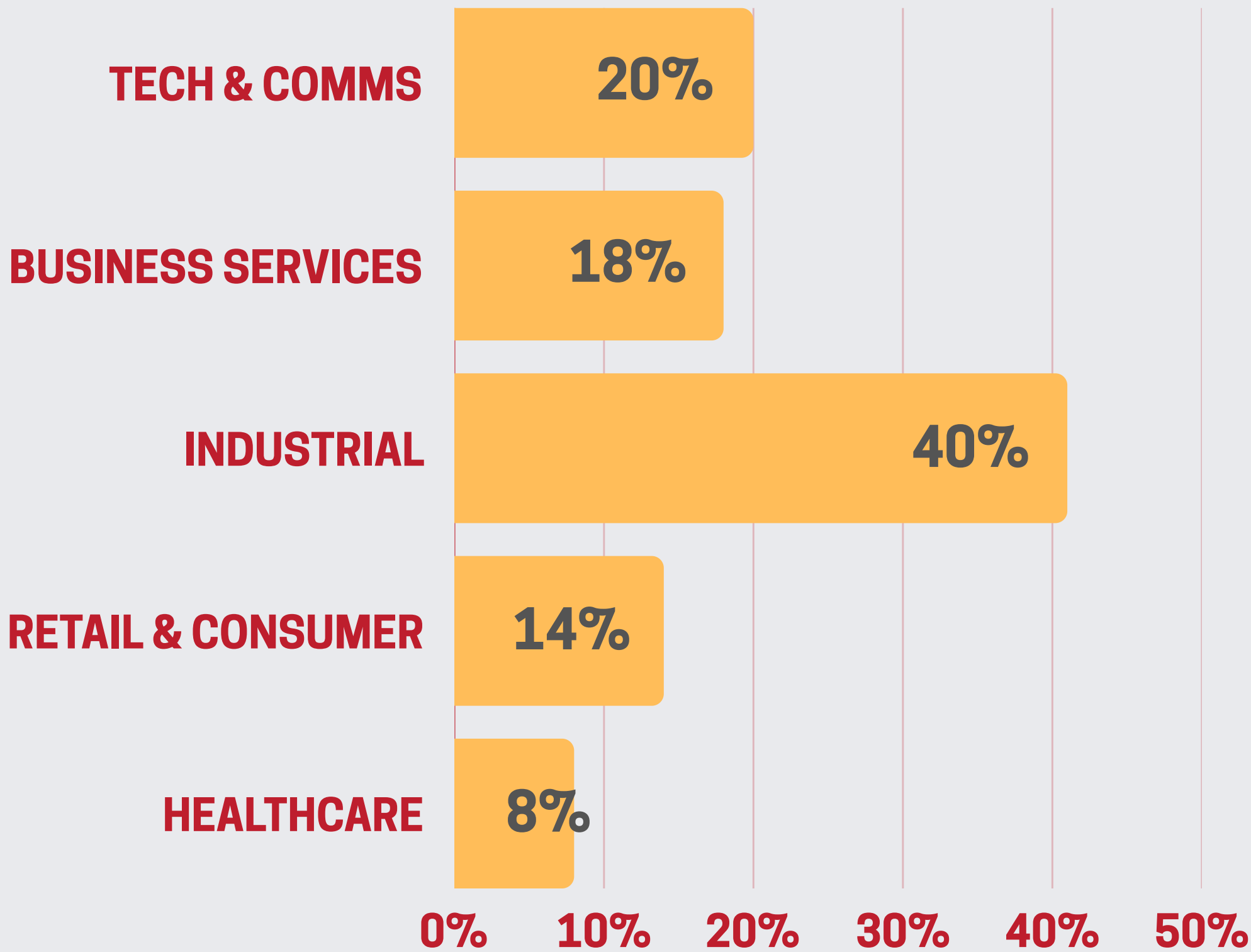
ACTIVITY BY UK REGION.



OTHER - Scotland, Wales, Northern Ireland

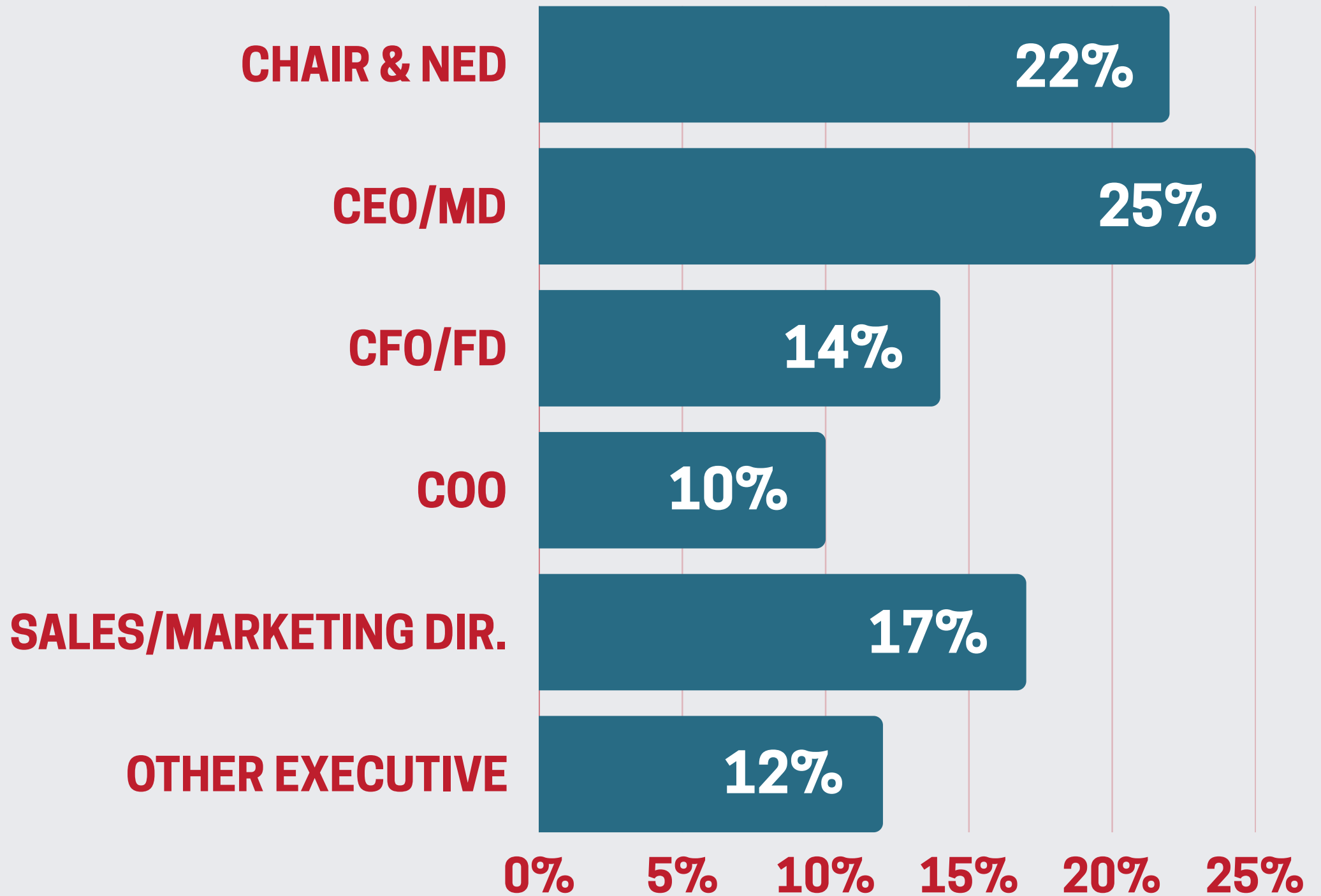
04

ACTIVITY BY SECTOR.



05

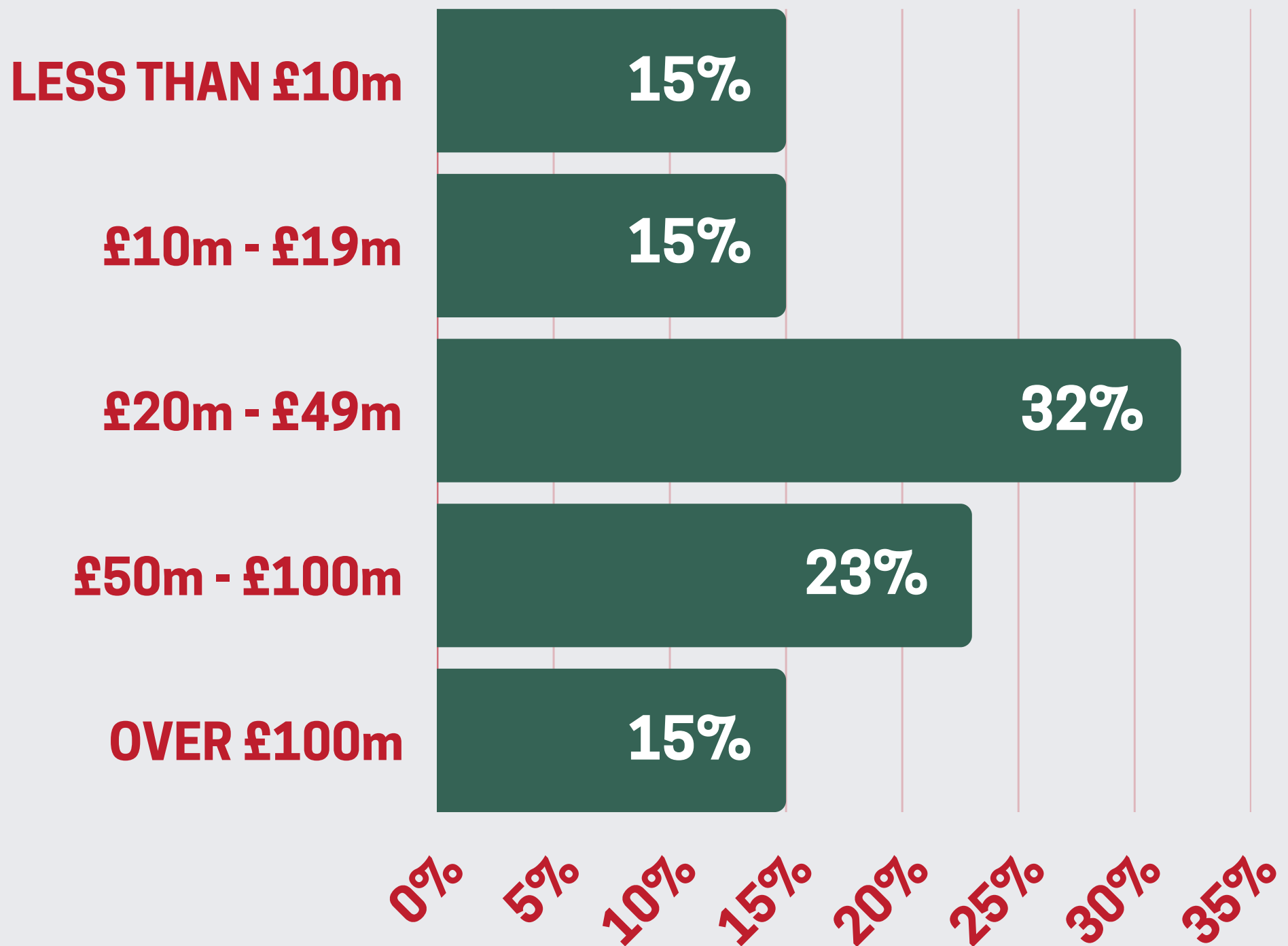
ACTIVITY BY ROLE.



OTHER = Strategy, HR, IT and PMO roles.

06

ACTIVITY BY CLIENT COMPANY TURNOVER.





07

SOME OF OUR SUCCESSFUL PLACEMENTS .

**We completed searches
across the mid market,
sourcing Board-level
talent to support our
clients' growth
objectives.**

CEO

Texecom

**Texecom
LDC**

NED

grouplink

**Grouplink Holding
Wille Finance AG**

CEO



**Egress Group
FPE Capital**

CHAIR & CFO

emtezz

**Empteezy Group
Chiltern Capital**

OPERATIONS DIRECTOR

**Composite &
Polymer Materials Group**



**Diamorph
Epiris**

NED



**Zimmer MedizinSysteme
All Seas Capital**

CIO



**CES Global
Allied Industrial Partners**

CEO



**Arnold AG
Privately-owned**

**MANAGING
DIRECTOR**



**GTS Flexible Materials
Growth Capital Partners**

**GROUP BUSINESS
DEVELOPMENT
DIRECTOR**



**AB Dynamics
Listed business**

CFO



**Walkers Transport
Total Capital Partners**

CEO



**Hawco
Bay Tree Private Equity**

08

GAVE BACK TO CHARITY.

We supported **ALZHEIMER'S RESEARCH UK**, the UK's leading dementia research charity, and **TOMONI MENTAL HEALTH**, a charity in Frankfurt specialising in the early detection and treatment of mental illness in young people.

**ALZHEIMER'S
RESEARCH UK** **FOR A
CURE**


TOMONI[®]
MENTAL HEALTH

**ON BEHALF OF THE ENTIRE
DIRECTORBANK TEAM, OUR
THANKS GO TO OUR CLIENTS,
CANDIDATES AND PARTNERS
FOR THEIR CONTINUED SUPPORT.**

UK. +44 20 7255 7940

GERMANY. +49 69 719 1829 0

enquiries@directorbank.com

Directorbank.com

DIRECTORBANK.